

COUNTY LINE
 CORPORATE LIMITS
 STATE TRUNKLINE
 COUNTY PRIMARY
 COUNTY LOCAL
 ADJACENT COUNTY
 CITY OR VILLAGE
 STREET

PRIMARY ROAD SYSTEM IS 15.14 MILES
 LOCAL ROAD SYSTEM IS 45.08 MILES

I HEREBY CERTIFY THAT THE ROADS SHOWN HEREON BY SYMBOL OR IN RED AS PRIMARY ROADS AND THOSE SHOWN HEREON BY SYMBOL OR IN GREEN AS LOCAL ROADS ARE IN USE AND ARE UNDER THE JURISDICTION OF THE COUNTY ROAD COMMISSION.

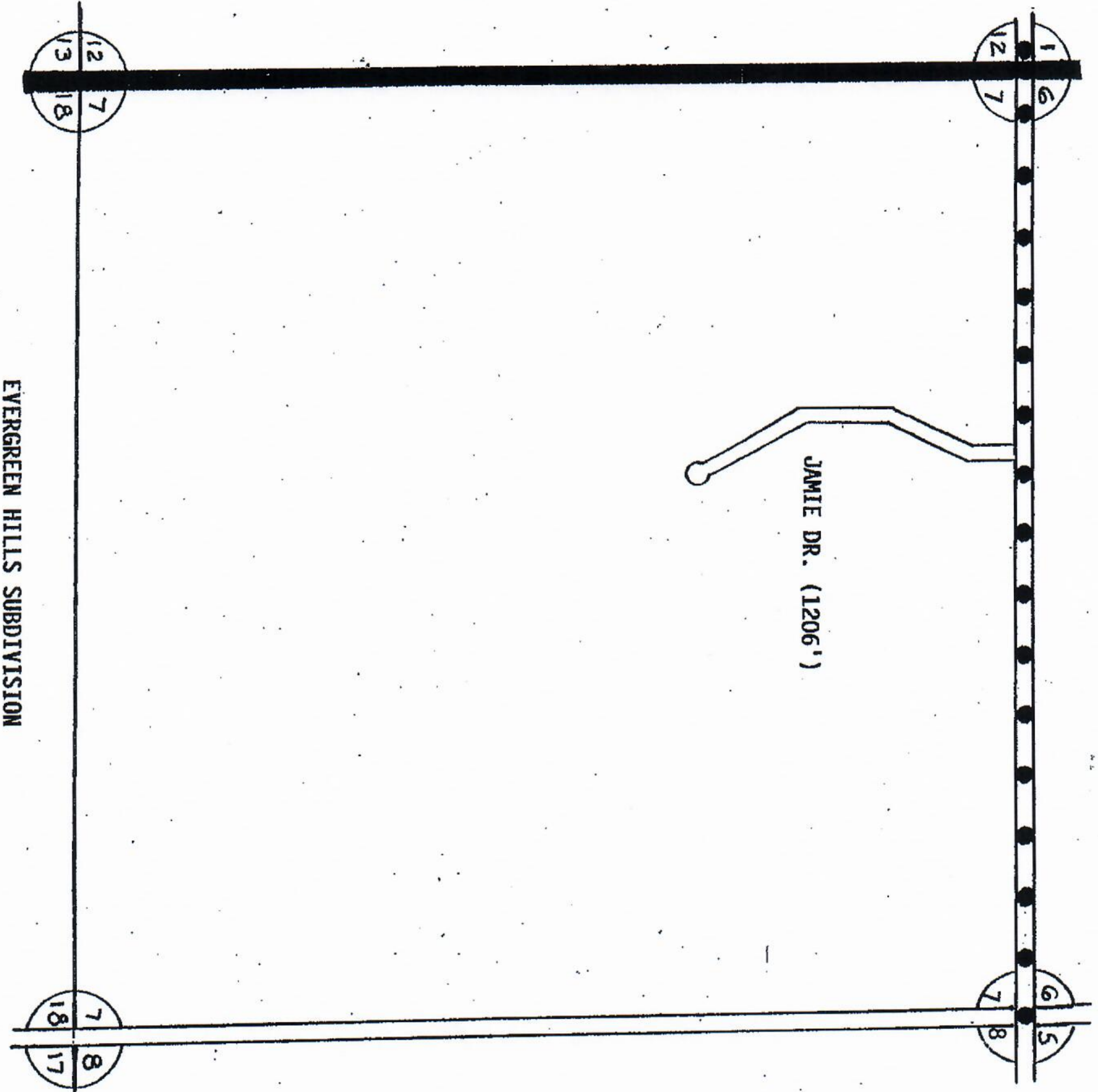
CHAIRMAN _____ DATE _____



SCALE 0 1/4 1/2 1 MILE
 One Inch Equals 3000 Ft.

Prepared by
 RIVERSIDE TWR
 T21N - RTW
 MISSAUKEE CO.

151415R16
9101112
516718
122314



LEGEND

- COUNTY LINE
- CORPORATE LIMITS
- STATE TRUNKLINE
- COUNTY PRIMARY
- COUNTY LOCAL
- ADJACENT COUNTY
- CITY OR VILLAGE STREET

TOTAL FEET 1206 EQUALS .23 MI

I HEREBY CERTIFY THAT THE ROADS SHOWN HEREON BY SYMBOL AS LOCAL ROADS ARE IN USE AND ARE UNDER THE JURISDICTION OF THE COUNTY ROAD COMMISSION.

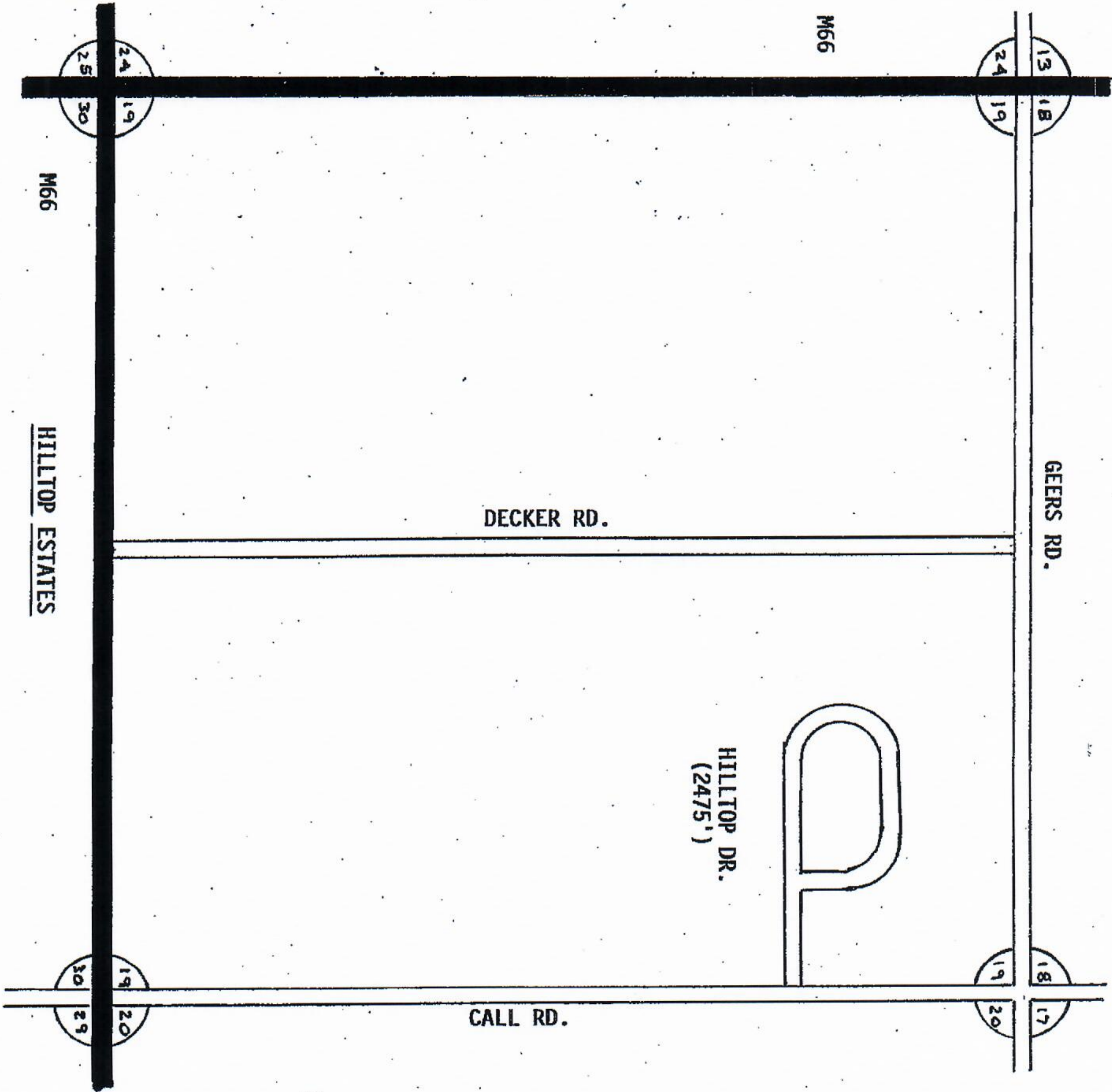
CHAIRMAN _____ DATE _____



SCALE
 0 _____ 1200
 ONE INCH EQUALS 600 FEET

TOWNSHIP RIVERSIDE
 SECTION 7
 COUNTY MISSAUKEE

EVERGREEN HILLS SUBDIVISION



LEGEND

- COUNTY LINE
- CORPORATE LIMITS
- STATE TRUNKLINE
- COUNTY PRIMARY
- COUNTY LOCAL
- ADJACENT COUNTY
- CITY OR VILLAGE STREET

TOTAL FEET 2475 EQUALS .47 M.

I HEREBY CERTIFY THAT THE ROAD: SHOWN HEREON BY SYMBOL AS LOCAL ROAD ARE IN USE AND ARE UNDER THE JURISDICTION OF THE COUNTY ROAD COMMISSION.

CHAIRMAN _____ DATE _____



SCALE
 0 _____ 1200
 ONE INCH EQUALS ONE MILE

TOWNSHIP RIVERSIDE
 SECTION 19
 COUNTY MISSAUKEE